



District wise Weather Warning Bulletin / जिलेवार मौसम चेतावनी बुलेटिन

Sate/राज्य:-	Meghalaya/मेघालय				Meghalaya/मेघालय
Date/दिनांक:-	19-05-2023				
District/जिला	Day1 19 May 2023	Day2 20 May 2023	Day3 21 May 2023	Time of issue/ समय Day4 22 May 2023	Mid-Day Day5 23 May 2023
SOUTH WEST GARO HILLS/दक्षिण पश्चिम गारो हिल्स	HEAVY RAINFALL IS VERY LIKELY AT ISOLATED PLACES	HEAVY RAINFALL IS VERY LIKELY AT ISOLATED PLACES	HEAVY RAINFALL IS VERY LIKELY AT ISOLATED PLACES	HEAVY RAINFALL IS LIKELY AT ISOLATED PLACES	HEAVY RAINFALL IS LIKELY AT ISOLATED PLACES
WEST GARO HILLS/पश्चिम गारो हिल्स	THUNDERSTORM WITH GUSTY WIND(30-40 Kmph)/ LIGHTNING AND HEAVY RAINFALL IS LIKELY AT ISOLATED PLACES	THUNDERSTORM WITH LIGHTNING AND HEAVY RAINFALL IS VERY LIKELY AT ISOLATED PLACES	HEAVY RAINFALL IS VERY LIKELY AT ISOLATED PLACES	HEAVY RAINFALL IS LIKELY AT ISOLATED PLACES	HEAVY RAINFALL IS LIKELY AT ISOLATED PLACES
SOUTH GARO HILLS/दक्षिण गारो हिल्स	THUNDERSTORM WITH GUSTY WIND(30-40 Kmph)/ LIGHTNING AND HEAVY RAINFALL IS LIKELY AT ISOLATED PLACES	THUNDERSTORM WITH LIGHTNING AND HEAVY RAINFALL IS VERY LIKELY AT ISOLATED PLACES	HEAVY RAINFALL IS VERY LIKELY AT ISOLATED PLACES	HEAVY RAINFALL IS LIKELY AT ISOLATED PLACES	HEAVY RAINFALL IS LIKELY AT ISOLATED PLACES
EAST GARO HILLS/पूर्व गारो हिल्स	THUNDERSTORM WITH GUSTY WIND(30-40 Kmph)/ LIGHTNING AND HEAVY RAINFALL IS LIKELY AT ISOLATED PLACES	THUNDERSTORM WITH LIGHTNING AND HEAVY RAINFALL IS VERY LIKELY AT ISOLATED PLACES	HEAVY RAINFALL IS VERY LIKELY AT ISOLATED PLACES	HEAVY RAINFALL IS LIKELY AT ISOLATED PLACES	HEAVY RAINFALL IS LIKELY AT ISOLATED PLACES
NORTH GARO HILLS/उत्तर गारो हिल्स	HEAVY RAINFALL IS VERY LIKELY AT ISOLATED PLACES	HEAVY RAINFALL IS VERY LIKELY AT ISOLATED PLACES	HEAVY RAINFALL IS VERY LIKELY AT ISOLATED PLACES	HEAVY RAINFALL IS LIKELY AT ISOLATED PLACES	HEAVY RAINFALL IS LIKELY AT ISOLATED PLACES
SOUTH WEST KHASI HILLS/दक्षिण पश्चिम खासी हिल्स	THUNDERSTORM WITH GUSTY WIND(30-40 Kmph)/ LIGHTNING AND HEAVY RAINFALL IS LIKELY AT ISOLATED PLACES	THUNDERSTORM WITH LIGHTNING AND HEAVY RAINFALL IS VERY LIKELY AT ISOLATED PLACES	HEAVY RAINFALL IS VERY LIKELY AT ISOLATED PLACES	HEAVY RAINFALL IS LIKELY AT ISOLATED PLACES	HEAVY RAINFALL IS LIKELY AT ISOLATED PLACES
WEST KHASI HILLS/पश्चिम खासी हिल्स	THUNDERSTORM WITH GUSTY WIND(30-40 Kmph)/ LIGHTNING AND HEAVY RAINFALL IS LIKELY AT ISOLATED PLACES	THUNDERSTORM WITH LIGHTNING AND HEAVY RAINFALL IS VERY LIKELY AT ISOLATED PLACES	HEAVY RAINFALL IS VERY LIKELY AT ISOLATED PLACES	HEAVY RAINFALL IS LIKELY AT ISOLATED PLACES	HEAVY RAINFALL IS LIKELY AT ISOLATED PLACES
EAST KHASI HILLS/पूर्व खासी हिल्स	THUNDERSTORM WITH GUSTY WIND(30-40 Kmph)/ LIGHTNING AND HEAVY RAINFALL IS LIKELY AT ISOLATED PLACES	THUNDERSTORM WITH LIGHTNING AND HEAVY RAINFALL IS VERY LIKELY AT ISOLATED PLACES	HEAVY RAINFALL IS VERY LIKELY AT ISOLATED PLACES	HEAVY RAINFALL IS LIKELY AT ISOLATED PLACES	HEAVY RAINFALL IS LIKELY AT ISOLATED PLACES
RI-BHOI/री-भोई	HEAVY RAINFALL IS VERY LIKELY AT ISOLATED PLACES	HEAVY RAINFALL IS VERY LIKELY AT ISOLATED PLACES	HEAVY RAINFALL IS VERY LIKELY AT ISOLATED PLACES	HEAVY RAINFALL IS LIKELY AT ISOLATED PLACES	HEAVY RAINFALL IS LIKELY AT ISOLATED PLACES
WEST JAINTIA HILLS/पश्चिम जयंतिया हिल्स	THUNDERSTORM WITH GUSTY WIND(30-40 Kmph)/ LIGHTNING AND HEAVY RAINFALL IS LIKELY AT ISOLATED PLACES	THUNDERSTORM WITH LIGHTNING AND HEAVY RAINFALL IS VERY LIKELY AT ISOLATED PLACES	HEAVY RAINFALL IS VERY LIKELY AT ISOLATED PLACES	HEAVY RAINFALL IS LIKELY AT ISOLATED PLACES	HEAVY RAINFALL IS LIKELY AT ISOLATED PLACES
EAST JAINTIA HILLS/पूर्व जयंतिया हिल्स	THUNDERSTORM WITH GUSTY WIND(30-40 Kmph)/ LIGHTNING AND HEAVY RAINFALL IS LIKELY AT ISOLATED PLACES	THUNDERSTORM WITH LIGHTNING AND HEAVY RAINFALL IS VERY LIKELY AT ISOLATED PLACES	HEAVY RAINFALL IS VERY LIKELY AT ISOLATED PLACES	HEAVY RAINFALL IS LIKELY AT ISOLATED PLACES	HEAVY RAINFALL IS LIKELY AT ISOLATED PLACES

The Warning for any day is valid from 0830 hours IST of the day till 0830 hrs IST of the next day

WARNING	Probabilistic Forecast		INTENSITY	RAINFALL(MM)
	Terms	Probability of Occurrence(%)	Light Rain	2.5 to 15.4
No Warning (No Action)	Unlikely	<25	Moderate rain	15.5 to 64.4
WATCH (Be Updated)	Unlikely	25-50	Heavy Rain	64.5 to 115.5
ALERT (Be prepared)	Unlikely	50-75	Very Heavy Rain	115.6 to 204.4
WARNING (Take Action)	Unlikely	>75	Extremely Heavy rain	>204.4



Email: metshillong@gmail.com; Phone: 0364-2561638

Website: <https://mausam.imd.gov.in>

For weather enquiry of any station in the country: 18001801717 (Toll free)

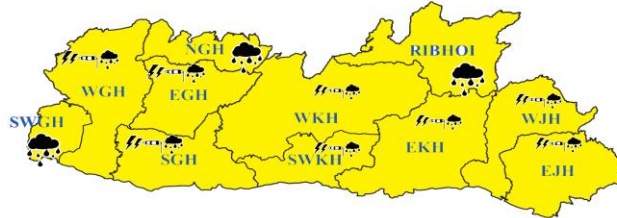
Kindly download and use "MAUSAM App" for location specific forecast and warning, "Meghdoot App for Agromet Advisory and Damini App for Lightning warning "



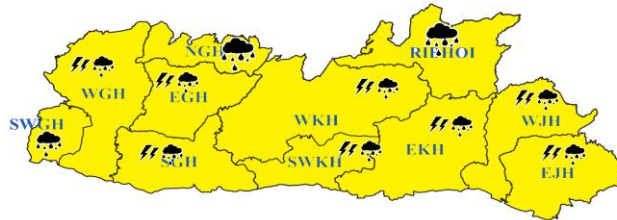
**Meteorological Centre, Shillong**  
 मौसम विज्ञान केंद्र , शिलांग  
**District-wise weather Warning- Meghalaya**

Date : 19-05-2023

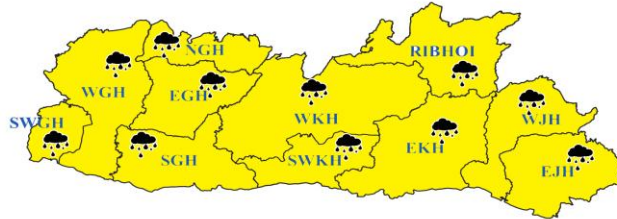
**DAY 1**  
Today



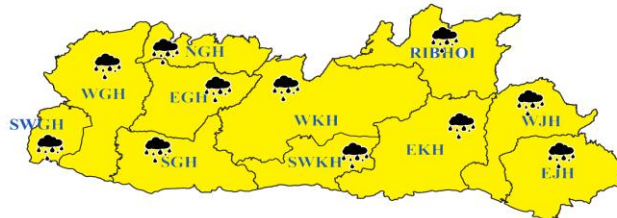
**DAY 2**  
Tomorrow



**DAY 3**



**DAY 4**



**DAY 5**



**WARNING**

<b>WARNING (TAKE ACTION)</b>
<b>ALERT ( BE PREPARED)</b>
<b>WATCH (BE UPDATED)</b>
<b>NO WARNING ( NO ACTION)</b>

**Probabilistic Forecast**

Terms	Probability of Occurrence (%)
Unlikely	< 25
Likely	25 - 50
Very Likely	50 - 75
Most Likely	> 75

- Heavy Rain
- Heavy Snow
- Thunderstorm
- Dust Storm
- Strong Winds
- Visibility
- Cyclone
- Squall/ Hail